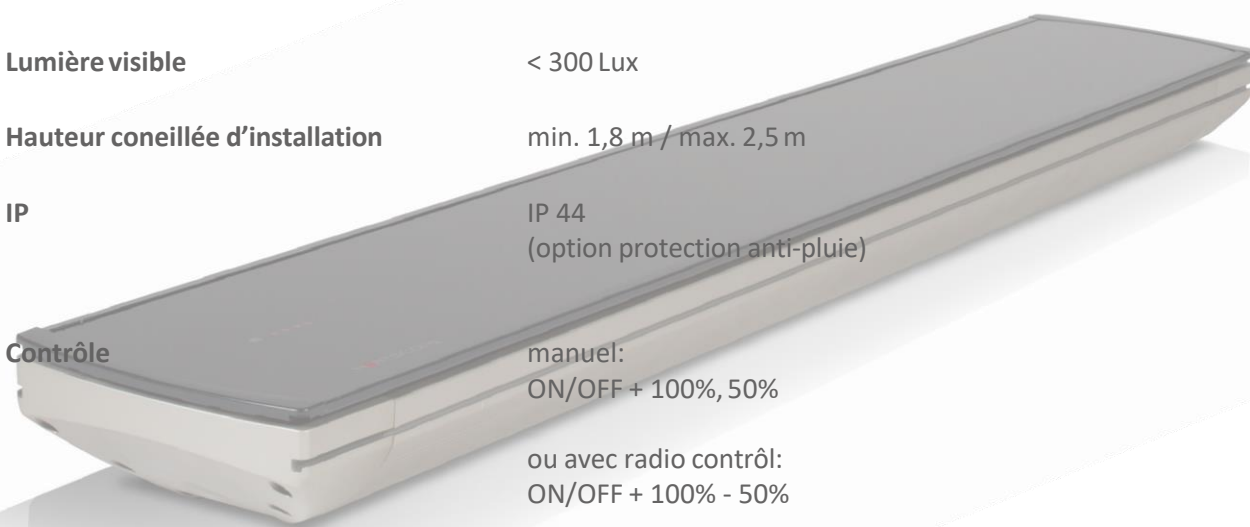


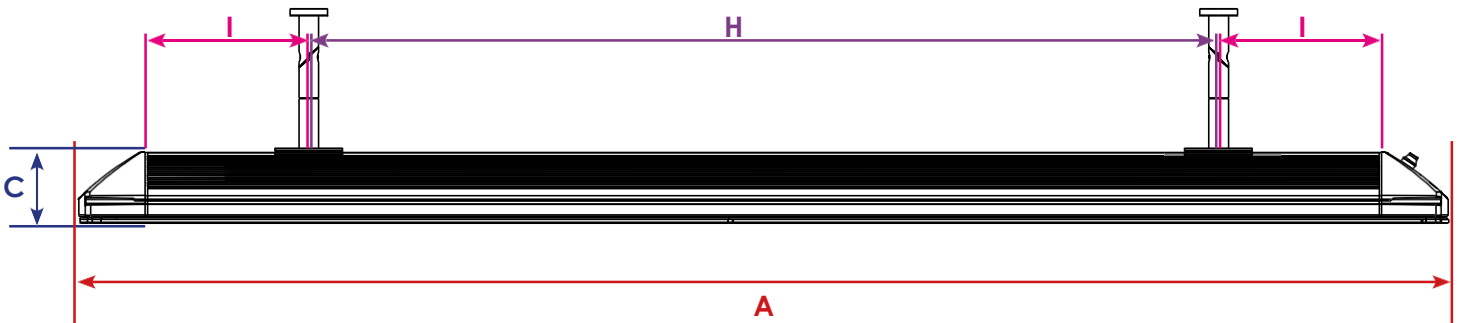
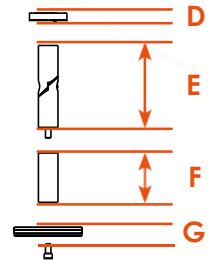
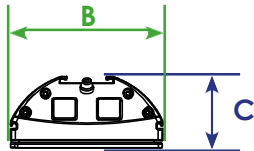
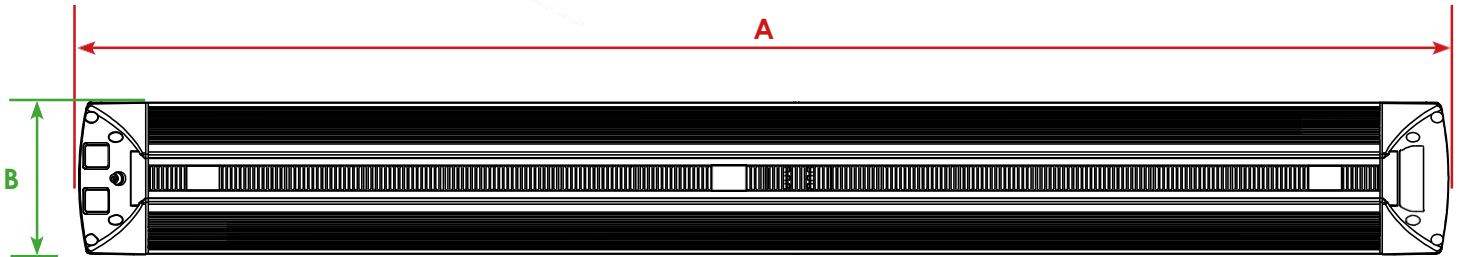
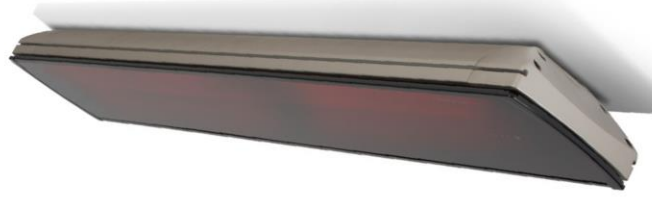
DONNÉES TECHNIQUE

HEATSCOPE Vision

Voltage	230 V AC ~ – 50/60 Hz
Puissance	1600 W / 2200 W / 3200 W
Ampérage	6,96 A / 9,57 A / 13,91 A
Câble	1,1 m / 3 x 1,5 mm ² ou 1,1 m / 4 x 1,5 mm ²
Température de surface	280-320 °C
Température du corps	max. 130 °C
Température du filament	1200-1300 °C
Température Kelvin	1550-1650 K
Puissance maximum en	~ 30 sec.
Lumière visible	< 300 Lux
Hauteur conseillée d'installation	min. 1,8 m / max. 2,5 m
IP	IP 44 (option protection anti-pluie)
Contrôle	manuel: ON/OFF + 100%, 50% ou avec radio contrôl: ON/OFF + 100% - 50%



HEATSCOPE VISION



	A	B	C	D	E	F	G	H	I
MHS-VE1600 MHS-VT1600	810 mm	184 mm	90 mm	9 mm	100 mm	60 mm	11 mm	≤ 300 mm	≥ 175 mm
MHS-VE2200 MHS-VT2200	1160 mm							≤ 650 mm	≥ 175 mm
MHS-VE3200 MHS-VT3200	1660 mm							≤ 1150 mm	≥ 175 mm